



18V LITHIUM ION

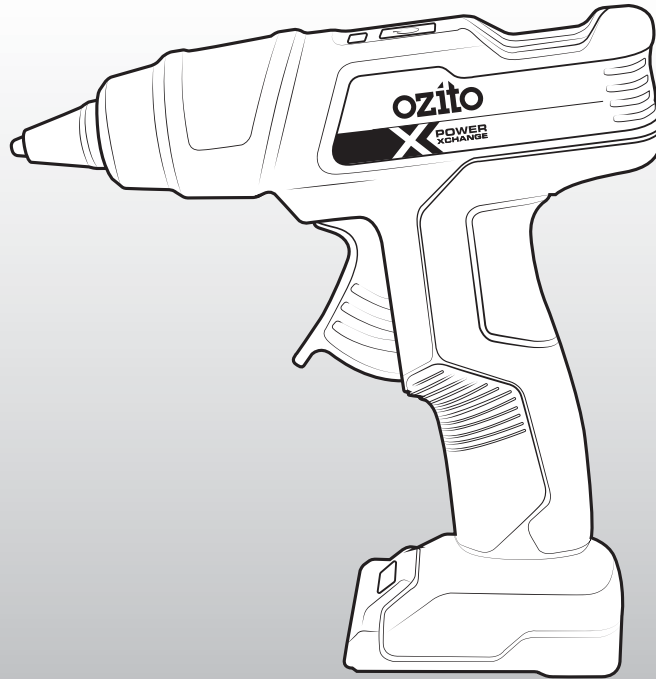
CORDLESS 11MM GLUE GUN

INSTRUCTION MANUAL

SPECIFICATIONS

Input:	18V
Pre-heating Time:	120s
Max. Heating Temp:	170°C
Glue Stick Size:	Ø11mm
Weight:	0.4kg

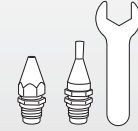
ozito.com.au



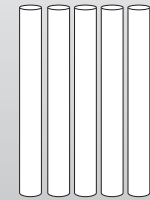
STANDARD EQUIPMENT



Cordless Glue Gun



Round Nozzle, Precision Nozzle & 13mm Hex Spanner



5 x Ø11mm Glue Sticks

5 YEAR
REPLACEMENT WARRANTY

PXGGS-011

WARRANTY

IN ORDER TO MAKE A CLAIM UNDER THIS WARRANTY YOU MUST RETURN THE PRODUCT TO YOUR NEAREST BUNNINGS WAREHOUSE WITH YOUR BUNNINGS REGISTER RECEIPT. PRIOR TO RETURNING YOUR PRODUCT FOR WARRANTY PLEASE TELEPHONE OUR CUSTOMER SERVICE HELPLINE:

Australia 1800 069 486
New Zealand 0508 069 486

TO ENSURE A SPEEDY RESPONSE PLEASE HAVE THE MODEL NUMBER AND DATE OF PURCHASE AVAILABLE. A CUSTOMER SERVICE REPRESENTATIVE WILL TAKE YOUR CALL AND ANSWER ANY QUESTIONS YOU MAY HAVE RELATING TO THE WARRANTY POLICY OR PROCEDURE.

WARNING

The following actions will result in the warranty being void.

- If the tool has been operated on a supply voltage other than that specified on the tool.
- If the tool shows signs of damage or defects caused by or resulting from abuse, accidents or alterations.
- Failure to perform maintenance as set out within the instruction manual.
- If the tool is disassembled or tampered with in any way.

The benefits provided under this warranty are in addition to other rights and remedies which are available to you at law.

Our goods come with guarantees that cannot be excluded at law. You are entitled to a replacement or refund for a major failure and for compensation for any other reasonably foreseeable loss or damage. You are also entitled to have the goods repaired or replaced if the goods fail to be of acceptable quality and the failure does not amount to a major failure.

Generally you will be responsible for all costs associated with a claim under this warranty, however, where you have suffered any additional direct loss as a result of a defective product you may be able to claim such expenses by contacting our customer service helpline above.

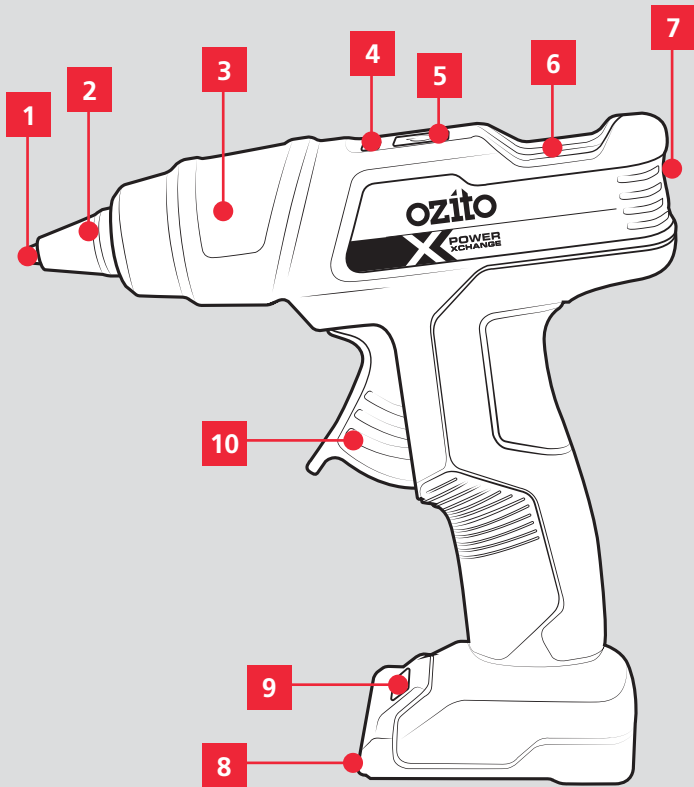
5 YEAR REPLACEMENT WARRANTY

Your Product is guaranteed for a period of 60 months from the original date of purchase and is intended for DIY (Do It Yourself) use only. If a product is defective it will be replaced in accordance with the terms of this warranty. **Lithium Ion batteries and chargers are covered by a 36 month warranty** and are excluded from the warranty extension. Warranty excludes consumable parts.

KNOW YOUR PRODUCT

CORDLESS 11MM GLUE GUN

- | | |
|---------------------------|--------------------------|
| 1. Round Nozzle | 6. Monitoring Window |
| 2. Nozzle Cover | 7. Glue Stick Inlet |
| 3. Tool Housing | 8. Battery Seating |
| 4. Status Indicator Light | 9. LED Worklight |
| 5. On/Off Button | 10. Flow Control Trigger |



ACCESSORIES

- | | |
|----------------------|----------------------|
| 11. 5 x Glue Sticks | 13. Precision Nozzle |
| 12. 13mm Hex Spanner | |



BATTERY & CHARGER

This tool is compatible with all batteries & chargers from the Ozito Power X Change range.

ONLINE MANUAL

Scan this QR Code with your mobile device to take you to the online manual.

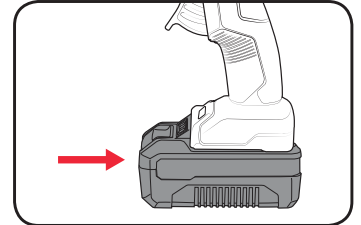


SETUP & PREPARATION

1. FITTING THE BATTERY

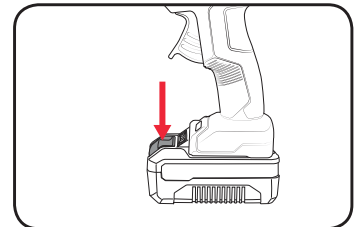
Installing The Battery Pack

1. Slide the battery into the tool base until it clicks into place.

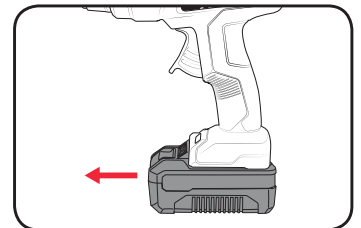


Removing The Battery Pack

1. Hold down the battery release button.



2. Slide the battery out.



5 YEAR
REPLACEMENT WARRANTY

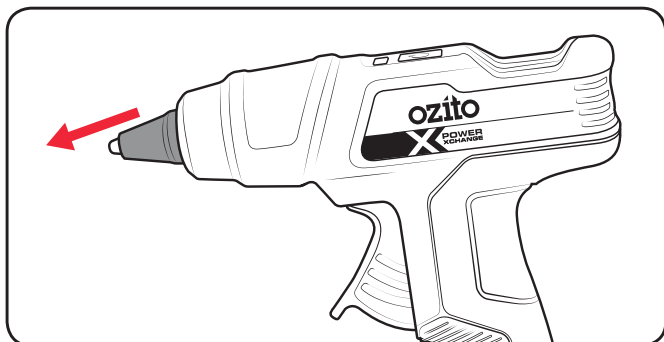
2. CHANGING NOZZLES

WARNING! ENSURE THE TOOL IS SWITCHED OFF, THE BATTERY IS REMOVED & THE TOOL HAS COOLED DOWN BEFORE PERFORMING ANY OF THE FOLLOWING TASKS.

Installing A Different Nozzle

The nozzles on this glue gun can be changed to better suit the task at hand.

1. Remove the rubber nozzle cover by pulling it off the glue gun.

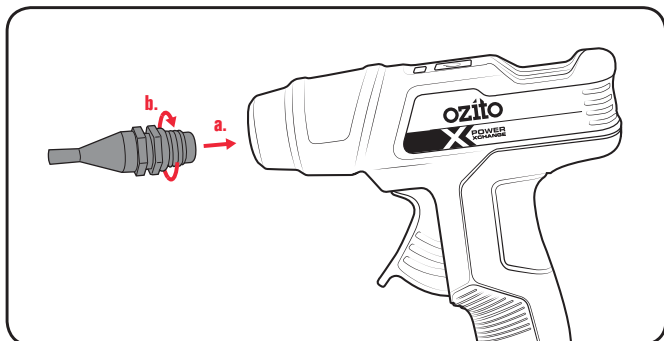


Note: The nozzle cover may be difficult to remove after the glue gun has been used. The spanner may be used to help remove it.

2. Unscrew the nozzle by turning it anti-clockwise with the 13mm spanner.

Note: Inspect the rubber O-ring on the nozzle for damage before fitting it. If the O-ring is worn, replace it before continuing to use the nozzle.

3. Fit the desired nozzle onto the end of the glue gun and tighten it by turning it clockwise.

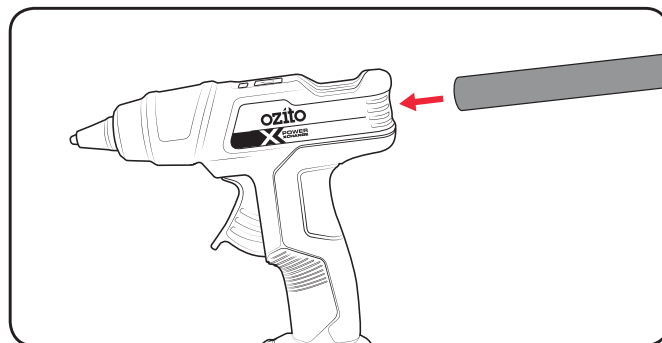


4. Fit the nozzle cover back onto the new nozzle.

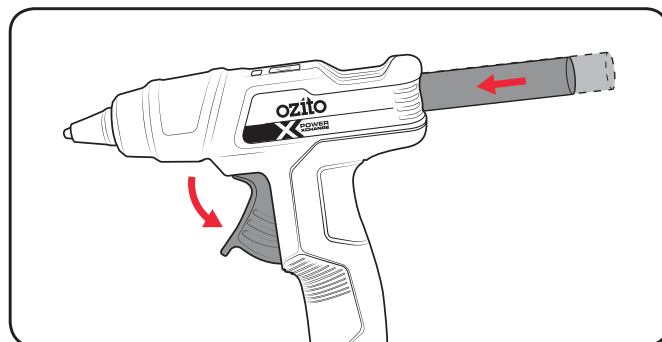
3. LOADING GLUE STICKS

Installing Glue Sticks

1. Insert the glue stick into the glue stick inlet.



2. Squeeze the flow control trigger multiple times to push the glue stick further down the channel.



WARNING! IN THE EVENT OF ACCIDENTAL SKIN CONTACT WITH HOT GLUE, RUN UNDER COLD WATER IMMEDIATELY.

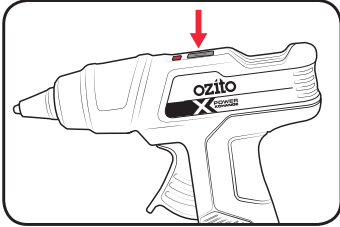
WARNING! DO NOT ALLOW HOT GLUE TO COME INTO CONTACT WITH THE PRODUCT HOUSING DURING USE.

OPERATION

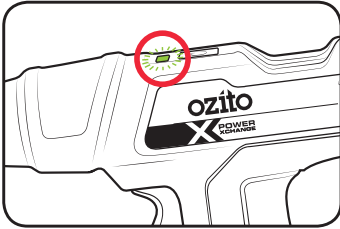
4. CONTROLS

Turning The Glue Gun On/Off

1. Press the on/off button. The status indicator light will light up red whilst the unit is heating up.



2. After 120s the status indicator light will turn green. The glue gun is now ready for use.

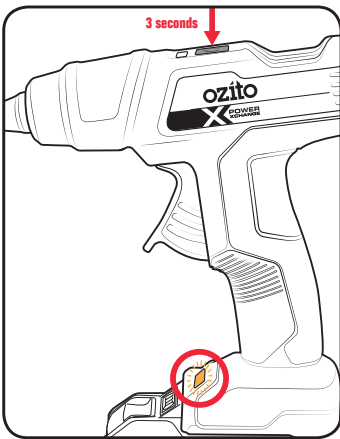


3. To turn the glue gun off, press the on/off button.

Note: The glue gun will automatically turn off after 5 minutes of inactivity.

LED Worklight

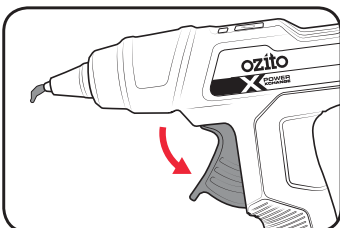
The LED worklight will come on automatically when the tool is switched on. To toggle the worklight on and off, press and hold the on/off button for 3 seconds while the tool is switched on.



Flow Control Trigger

The flow rate of the glue is dependent on how much pressure is applied to the flow control trigger.

1. Squeeze the flow control trigger to release the glue.
2. To stop the flow of glue from the gun, release the flow control trigger.

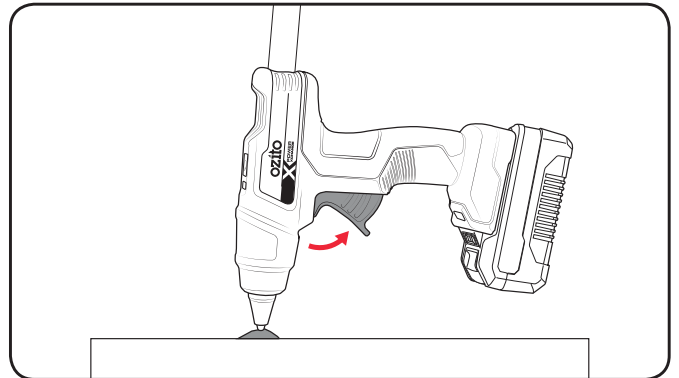


5. GLUING

WARNING! THE GLUE GUN HOUSING BETWEEN THE NOZZLE AND HANDLE MAY BECOME HOT DURING USE. THIS IS PERFECTLY NORMAL, HOWEVER AVOID PROLONGED CONTACT WITH THE AREA UNTIL THE GLUE GUN HAS COOLED DOWN.

Applying Glue

1. Turn the glue gun on and allow the tool to heat up.
2. Hold the nozzle against the surface to be glued and press the flow control trigger to deposit some glue.



Note: Ensure the glue sticks are heated fully to allow an even flow of glue.

3. Press both workpiece surfaces together immediately and apply pressure. Hold for 30 seconds to allow the glue to set.

WARNING! THIS GLUE GUN MUST BE PLACED UPRIGHT ON ITS BATTERY WHEN NOT IN USE.

WARNING! THE GLUE GUN WILL REMAIN HOT FOR A FEW MINUTES AFTER USE. DO NOT STORE THE GLUE GUN DIRECTLY AFTER USE; ALLOW IT TO COOL AND THE GLUE STICK TO SOLIDIFY BEFORE STORING.

WARNING! GLUE STAINS ON TEXTILES CANNOT BE REMOVED. WEAR APPROPRIATE PERSONAL PROTECTIVE EQUIPMENT AND WORK CLOTHES.

MAINTENANCE



WARNING! BEFORE CLEANING OR CARRYING OUT ANY MAINTENANCE PROCEDURE, ENSURE THAT THE BATTERIES HAVE BEEN REMOVED.

Cleaning

- It is recommended that the tool is cleaned immediately after each use; wipe equipment with a clean cloth.
- Do not use cleaning agents or solvents; these could attack the plastic parts of the equipment.
- Ensure that no water can seep into the device.

Storage

When not in use, the tool should be stored in a dry, frost free location; keep out of children's reach. Allow the tool to cool down before storage.

Note: Ozito Industries will not be responsible for any damage or injuries caused by repair of the tool by an unauthorised person or by mishandling.

DESCRIPTION OF SYMBOLS

V	Volts	s	Seconds
°C	Degrees Celsius		Wear eye protection
	Hot surface; do not touch		Double insulated
	Regulatory Compliance Mark (RCM)		Warning
	Read instruction manual		

CARING FOR THE ENVIRONMENT



Power tools that are no longer usable should not be disposed of with household waste but in an environmentally friendly way. Please recycle where facilities exist. Check with your local council authority for recycling advice.



Recycling packaging reduces the need for landfill and raw materials. Reuse of recycled material decreases pollution in the environment. Please recycle packaging where facilities exist. Check with your local council authority for recycling advice.

SPARE PARTS

Spare parts can be ordered from the Special Orders Desk at your local Bunnings Warehouse.


For further information, or any parts not listed here, visit www.ozito.com.au or contact Ozito Customer Service:

Australia 1800 069 486

New Zealand 0508 069 486

E-mail: enquiries@ozito.com.au

ELECTRICAL SAFETY

 **WARNING!** When using mains-powered tools, basic safety precautions, including the following, should always be followed to reduce risk of fire, electric shock, personal injury and material damage.

Read the whole manual carefully and make sure you know how to switch the tool off in an emergency, before operating the tool.

Save these instructions and other documents supplied with this tool for future reference.

The charger has been designed for 230V and 240V only. Always check that the power supply corresponds to the voltage on the rating plate.

Note: The supply of 230V and 240V on Ozito tools are interchangeable for Australia and New Zealand.

 This tools charger is double insulated; therefore no earth wire is required.

Note: Double insulation does not take the place of normal safety precautions when operating this tool. The insulation system is for added protection against injury resulting from a possible electrical insulation failure within the tool.

If the supply cord is damaged, it must be replaced by an electrician or a power tool repairer in order to avoid a hazard.


Using an Extension Lead

Always use an approved extension lead suitable for the power input of this tool. Before use, inspect the extension lead for signs of damage, wear and ageing. Replace the extension lead if damaged or defective.

When using an extension lead on a reel, always unwind the lead completely. Use of an extension lead not suitable for the power input of the tool or which is damaged or defective may result in a risk of fire and electric shock.

The power supply for this products charger should be protected by a residual current device (rated at 30mA or less). A residual current device reduces the risk of electric shock.

GENERAL POWER TOOL SAFETY WARNINGS

 **WARNING!** Read all safety warnings and all instructions. Failure to follow the warnings and instructions may result in electric shock, fire and/or serious injury.

Save all warnings and instructions for future reference. The term "power tool" in the warnings refers to your mains-operated (corded) power tool or battery-operated (cordless) power tool.

1. Work area safety

- Keep work area clean and well lit.** Cluttered or dark areas invite accidents.
- Do not operate power tools in explosive atmospheres, such as in the presence of flammable liquids, gases or dust.** Power tools create sparks which may ignite the dust or fumes.
- Keep children and bystanders away while operating a power tool.** Distractions can cause you to lose control.

2. Electrical safety

- Power tool plugs must match the outlet.** Never modify the plug in any way. Do not use any adapter plugs with earthed (grounded) power tools. Unmodified plugs and matching outlets will reduce risk of electric shock.
- Avoid body contact with earthed or grounded surfaces, such as pipes, radiators, ranges and refrigerators.** There is an increased risk of electric shock if your body is earthed or grounded.
- Do not expose power tools to rain or wet conditions.** Water entering a power tool will increase the risk of electric shock.
- Do not abuse the cord.** Never use the cord for carrying, pulling or unplugging the power tool. Keep cord away from heat, oil, sharp edges or moving parts. Damaged or entangled cords increase the risk of electric shock.
- When operating a power tool outdoors, use an extension cord suitable for outdoor use.** Use of a cord suitable for outdoor use reduces the risk of electric shock.

3. Personal safety

- Stay alert, watch what you are doing and use common sense when operating a power tool.** Do not use a power tool while you are tired or under the influence of drugs, alcohol or medication. A moment of inattention while operating power tools may result in serious personal injury.
- Use personal protective equipment.** Always wear eye protection. Protective equipment such as dust mask, non-skid safety shoes, hard hat, or hearing protection used for appropriate conditions will reduce personal injuries.
- Prevent unintentional starting.** Ensure the switch is in the off-position before connecting to power source and/or battery pack, picking up or carrying the tool. Carrying power tools with your finger on the switch or energising power tools that have the switch on invites accidents.

- Remove any adjusting key or wrench before turning the power tool on.** A wrench or a key left attached to a rotating part of the power tool may result in personal injury.
- Do not overreach.** Keep proper footing and balance at all times. This enables better control of the power tool in unexpected situations.
- Dress properly.** Do not wear loose clothing or jewellery. Keep your hair, clothing and gloves away from moving parts. Loose clothes, jewellery or long hair can be caught in moving parts.
- If devices are provided for the connection of dust extraction and collection facilities, ensure these are connected and properly used.** Use of dust collection can reduce dust-related hazards.
- Do not let familiarity gained from frequent use of tools allow you to become complacent and ignore tool safety principles.** A careless action can cause severe injury within a fraction of a second.


4. Power tool use and care

- Do not force the power tool.** Use the correct power tool for your application. The correct power tool will do the job better and safer at the rate for which it was designed.
- Do not use the power tool if the switch does not turn it on and off.** Any power tool that cannot be controlled with the switch is dangerous and must be repaired.
- Disconnect the plug from the power source and/or the battery pack from the power tool before making any adjustments, changing accessories, or storing power tools.** Such preventive safety measures reduce the risk of starting the power tool accidentally.
- Store idle power tools out of the reach of children and do not allow persons unfamiliar with the power tool or these instructions to operate the power tool.** Power tools are dangerous in the hands of untrained users.
- Maintain power tools.** Check for misalignment or binding of moving parts, breakage of parts and any other condition that may affect the power tool's operation. If damaged, have the power tool repaired before use. Many accidents are caused by poorly maintained power tools.
- Keep cutting tools sharp and clean.** Properly maintained cutting tools with sharp cutting edges are less likely to bind and are easier to control.
- Use the power tool, accessories and tool bits etc. in accordance with these instructions, taking into account the working conditions and the work to be performed.** Use of the power tool for operations different from those intended could result in a hazardous situation.
- Keep handles and grasping surfaces dry, clean and free from oil and grease.** Slippery handles and grasping surfaces do not allow for safe handling and control of the tool in unexpected situations.

5. Service

- Have your power tool serviced by a qualified repair person using only identical replacement parts.** This will ensure that the safety of the power tool is maintained.

GLUE GUN SAFETY WARNINGS

 This appliance is not intended for use by persons (including children) with reduced physical, sensory or mental capabilities, or lack of experience and knowledge, unless they have been given supervision or instruction concerning use of the appliance by a person responsible for their safety. Young children should be supervised to ensure that they do not play with the appliance.

- Be careful when using the appliance in places where there are combustible materials;
- Do not apply to the same place for a long time;
- Do not use in the presence of an explosive atmosphere;
- Be aware that heat may be conducted to combustible materials that are out of sight;
- The glue gun will remain hot for a few minutes after use. Do not store the glue gun directly after use; allow it to cool and the glue stick to solidify before storing.
- Do not leave the appliance unattended when it is switched on.
- Do not touch hot glue.
- Do not leave glue gun unattended while in use or directly after use.
- Do not touch the nozzle end of the gun while in use or directly after use.
- Do not inhale vapours generated while in use.

- Do not attempt to feed any other materials through the glue gun, eg. crayons, sealants, candles etc.
- Ensure that the work area is well ventilated.
- This glue gun must be placed upright on its battery when not in use.