

Metal Drilling & Milling machine MBF 550

Art.-No.: **42.530.00**

Bar-Code: 4006825509632

Sales Unit: 1 pc

The precise drilling and milling machine MBF 550 is excellent qualified for handling with several materials like plastic and metal. The tools can be changed fast and easily, thus you can work exact and more efficient with the MBF 550. The spindle speed can be continuously regulated and enables an accurate adjustment to the working material. Due to the compact construction and the easy handling the MBF 550 is for all DIY excellent qualified.

Features:

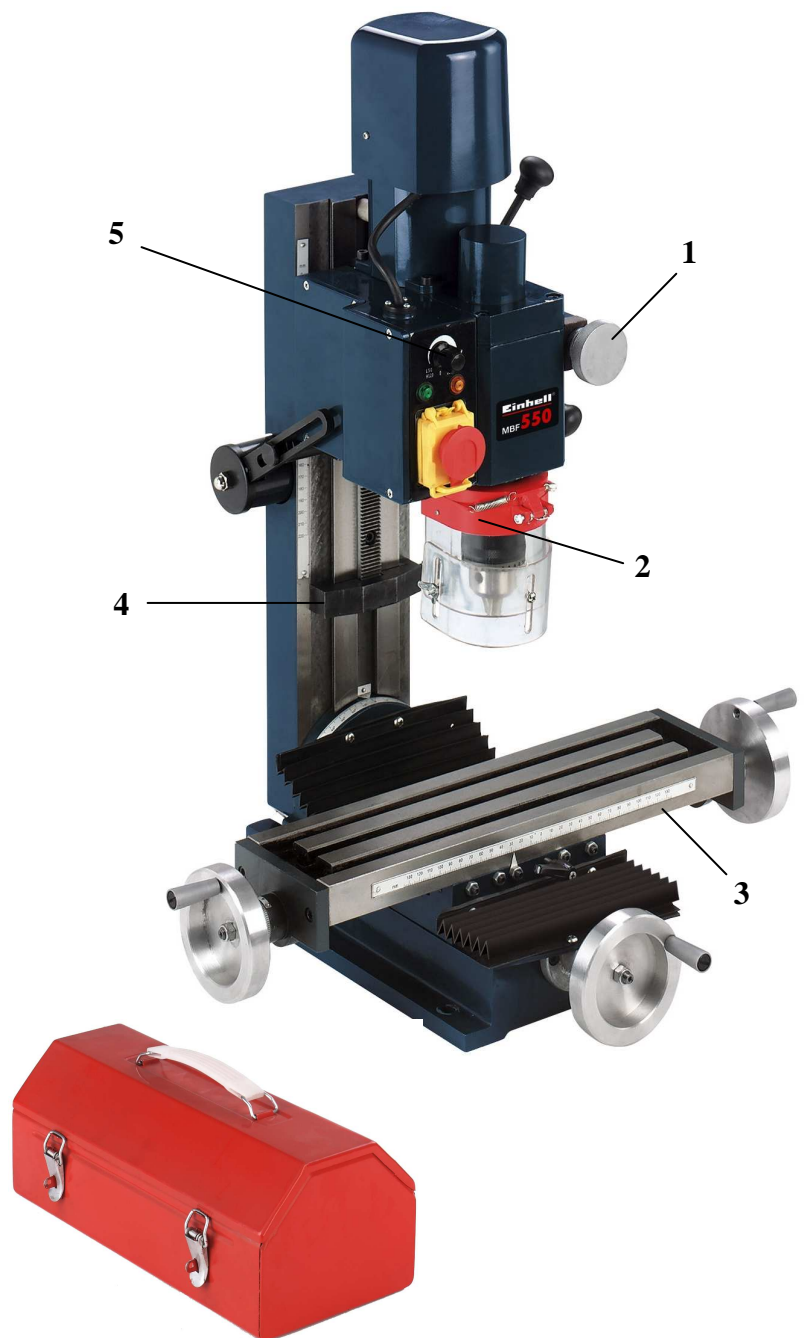
- Adjustable wheel for fine feeding (1)
- Foldable chipping protection (2)
- Cross table with diagonal- and length slide (3)
- Depth gauge (4)
- Electronic speed control (5)
- 2 speed areas (L/H)

Technical Data:

- Voltage: 230V ~ 50Hz
- Spindle rotary speed: L (50-1100 rpm)
H (120-2500 rpm)
- Watts: 550 watts (S3 50%)
- Table size: 410 x 110 mm
- Diagonal axis: 100 mm
- Longitudinal axis: 250 mm
- Vertical axis: 220 mm
- Spindle-angle rotation: -45° to +45°
- Drilling diameter: 13 mm
- End milling diameter: 13 mm
- Face milling diameter: 30 mm
- Morse conus inside spindle: MT 3
- Weight: approx. 77,5 kg
- Packing dimension: 570 x 740 x 510 mm

Standard accessory:

- Ring gear drill chuck 3-16 mm with drill chuck key
- 3 x open-ended spanner 32/36 mm; 16/13 mm; 10/8 mm
- Hook spanner
- Plastic oil tank
- Tie rod
- Locating pin for spindle locking
- 4 groove stones M8
- 4 threaded bolt 45 mm ; M8
- 4 screw nuts M8
- 4 allen keys 3/4/5/6 mm



Abbildungen können nicht im Serien-Lieferumfang enthaltenes Zubehör darstellen / Illustrations can contain accessories, which are not included in standard extent of delivery.

Abbildungen ähnlich, produktionsbedingte Abweichung vorbehalten / Illustration similar (in design), production-wise modifications reserved

File: G:\Webshop\T-Produktbeschreibung\60\Originale_Englisch_PA04\4253000_01014.doc

Erstelldatum / create date: 28.02.2005 9:51

Aktualisiert / up dated: 06.07.2005

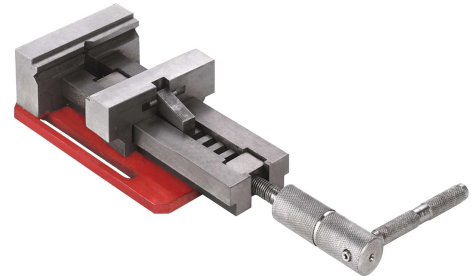
As special accessory available:

Machinery-vice with quick adjustment

Ideal for quick and safe fix-clamping of workpieces on the machinery board

Art.-No.: **42.530.10**

Bar-Code: **4006825510249**



Clamping pincers kit 9 pcs.

For safe retaining of pole-cutters
Ø 4; 6; 8; 10; 12; 14; 16mm

Art.-No.: **42.530.11**

Bar-Code: **4006825510256**



Clamping claws kit 58 pcs.

For safe fix-clamping of workpieces on the machinery board

Art.-No.: **42.530.12**

Bar-Code: **4006825510263**



Turn-insert-cutter

Diameter Ø30mm

Art.-No.: **42.530.13**

Bar-Code: **4006825510270**



HM – turn-inserts 2 pcs.

Applicable for turn-insert-cutter
Art.-No.: 42.530.13

Art.-No.: **42.530.14**

Bar-Code: **4006825510287**

