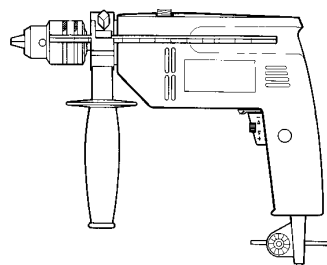


**GB** Operating Instructions  
Electronic Hammer Drill

**P O W E R**  
**CRAFT**

**CE**

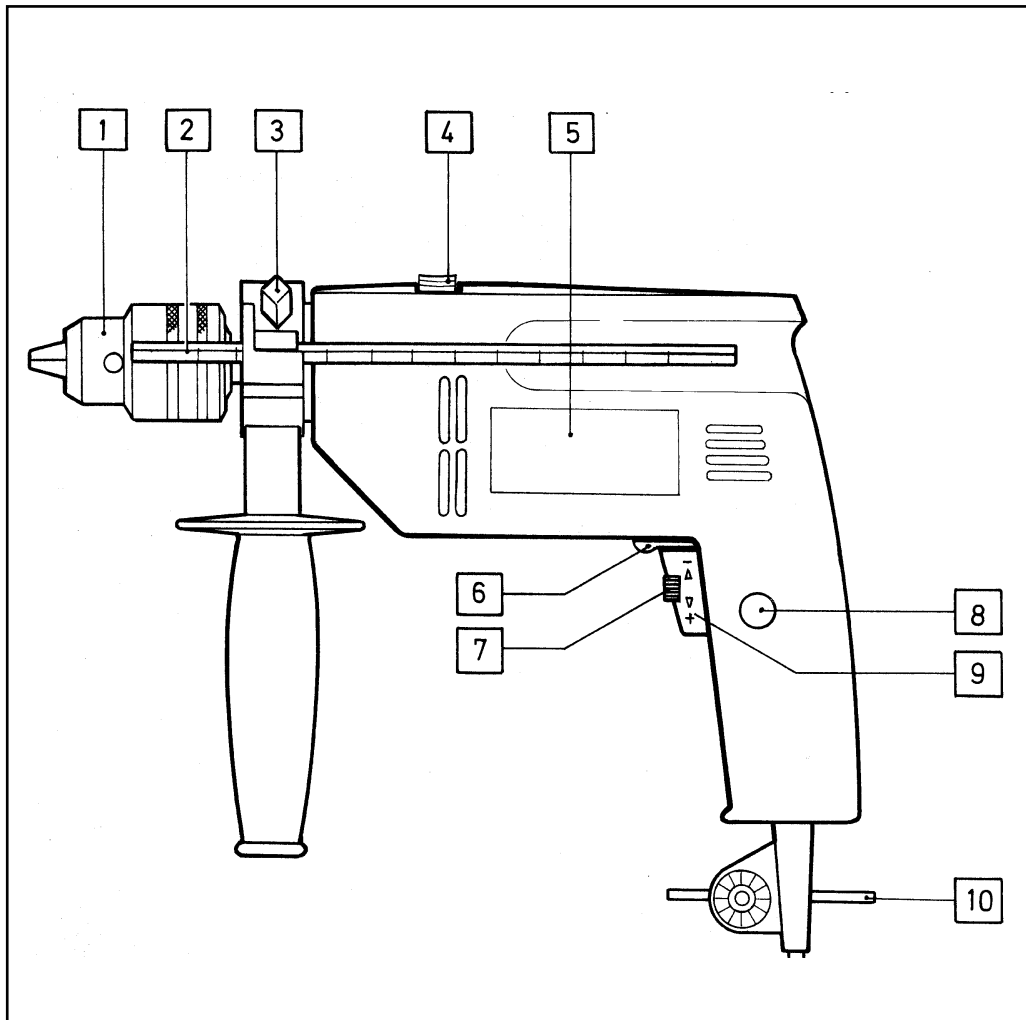
**Art.-Nr.: 42.586.45**



**PDM 600**



Please read the operating instructions meticulously and pay particular attention to the safety instructions. Keep the operating instructions together with the drill.



## Scope of delivery package

PDM 600,  
Self-centering chuck  
1.5 -13 mm,  
Additional grip with bit stop

## Description

- 1 Scroll chuck
- 2 Depth stop
- 3 Additional handle
- 4 Selector button: drill/hammer
- 5 Rating plate
- 6 Selector button:  
clockwise/anticlockwise
- 7 Speed control
- 8 Locking button
- 9 On/Off switch
- 10 Chuck key

## Technical Data

Voltage	230 V
Power input:	500 Watt
Drilling capacity:	Concrete 16 mm Steel 13 mm Wood 25 mm
Load speed:	0-2200 min <sup>-1</sup>
Number of blows:	0-27.000 min <sup>-1</sup>
Sound pressure level	LPA 82 dB(A)
Sound power level	LWA 92.6 dB(A)
Radio suppressed in accordance with EC Guidelines 89/336/EEC	

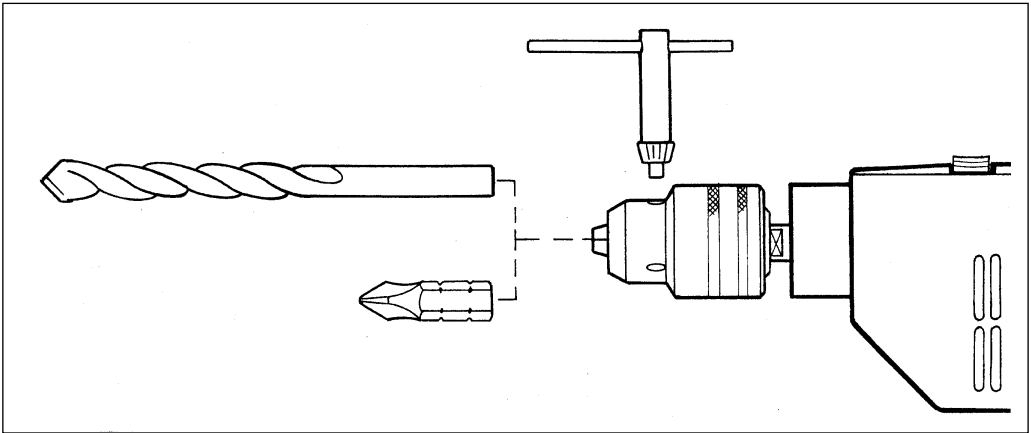
## Caution

- The PDM 600 is not designed for the operating of auxiliary devices.
- Do not use near steams or inflammable liquids.
- Only use sharp bits and suitable screwing bits.
- Remove the plug from the socket for all adjusting and cleaning work.
- Protect the mains cable against any damage. Oil and acids can damage the cable.
- Do not carry the device by the mains cable.
- Do not remove the plug from the socket by pulling the mains cable.
- Make sure before inserting the plug that the operating switch is not locked.
- When using a cable drum uncoil the cable completely. Cross-section of wire at least 1,5 mm<sup>2</sup>.
- Do not overload machine.
- Secure all workpieces to be processed sufficiently.
- Do not allow children to have access.
- Make sure you have a secure stance on ladders or scaffolding when using the drill free-hand.
- Localise lines with a line detector in walls where power, water or gas lines are laid invisibly.
- Wear protection goggles and use a dust mask for dust-producing work.
- Always arrange for a qualified electrician to carry out repairs
- Use only original replacement parts

- The level of noise at the workplace may exceed 85 dB(A). In this case you will need to introduce noise protection measures for the user. The noise generated by this electric tool was measured in accordance with ICE 59 CO 11, IEC 704, DIN 45635 Part 21, NFS 31-031 (84/537/EEC).

## Maintenance

- Always keep the drill clean.
- Do not use corroding agents for cleaning plastic.
- Check carbon brushes in the case of excessive sparking.
- Keep ventilation channels free.
- If you discover any damage, you can define spare parts precisely on account of the exploded view drawing and parts list and place your request with our customer service.



**On/Off switch:**  
**To switch on:** Press switch A  
**Continuous operation:** Lock switch A with locking button B  
**To switch off:** Press switch A briefly

The speed is varied by applying more or less pressure on switch A. You can preselect the speed by turning the knurled screw in switch A.

Push the slide switch to position 'hammer'. **Do not move this switch until the drill has stopped!**

**Please note:** This switch should be in 'drill' position when drilling holes in tiles.

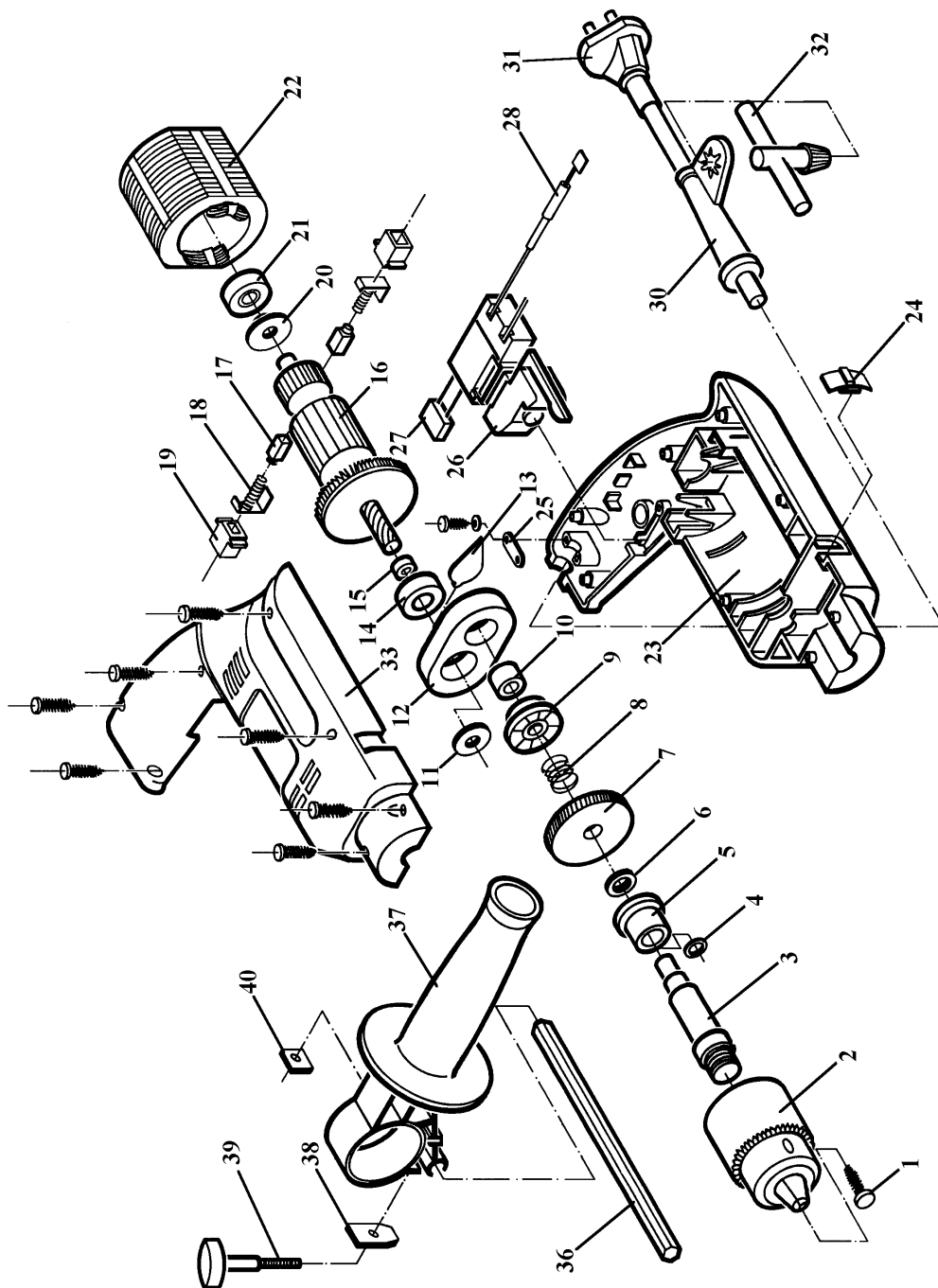
Push the slide switch to position 'drill'. **Do not move this switch until the drill has stopped!**

<b>(D)</b>	<b>EG Konformitätserklärung</b> Der Unterzeichnende erklärt im Namen der Firma	<b>(GB)</b>	<b>EC Declaration of Conformity</b> The Undersigned declares, on behalf of	<b>(E)</b>	<b>Déclaration de Conformité CE</b> Le soussigné déclare, au nom de	<b>(NL)</b>	<b>EC Conformiteitsverklaring</b> De ondergetekende verklaart in naam van de firma	<b>(E)</b>	<b>Declaración CE de Conformidad</b> Por la presente, el abajo firmante declara en nombre de la empresa	<b>(P)</b>	<b>Declaração de conformidade CE</b> O abaixo assinado declara em nome da empresa
<b>ISC GmbH, International Service Center - Eschenstraße 6 · D-94405 Landau/Isar</b>											
daß die	that the	que	la machine / le produit	que	dat de	machine/produkt	maquina/producto	que	que el/la	que	a máquina/producto
Maschine/Produkt	Machine / Product	Electronic Hammer Drill	Perceuse électronique à percussion	Elektronische klopboormachine	Taladradora percutora electrónica	marca	marca	marca	marca	marca	Berbequim electrónico de percussão
Marke	produced by:		du fabricant	merk							
<b>P<sup>O</sup> W E F T CRAFT</b>											
<b>Typ</b>	<b>Type</b>	<b>Type</b>	<b>Type</b>	<b>Type</b>	<b>Type</b>	<b>tipo</b>	<b>tipo</b>	<b>tipo</b>	<b>tipo</b>	<b>tipo</b>	<b>tipo</b>
<b>PDM 600</b>											
– Seriennummer auf dem Produkt – <input checked="" type="checkbox"/> EG Maschinenrichtlinie 89/392/EWG mit Änderungen <input checked="" type="checkbox"/> EG Niederspannungsrichtlinie 73/23/EWG <input checked="" type="checkbox"/> EG Richtlinie Elektromagnetische Verträglichkeit 89/336/EWG mit Änderungen entspricht.	– Serial number specified on the product - <input checked="" type="checkbox"/> EC Directive regarding machinery 89/392 EEC, as amended; <input checked="" type="checkbox"/> EC Directive regarding low-voltage equipment 73/23 EEC; <input checked="" type="checkbox"/> EC Directive regarding electromagnetic compatibility 89/336 EEC, as amended.	– no. série indiqué sur le produit (and/ent) à la machine CE relative aux machines 89/392 CEE avec les modifications y apportées; <input checked="" type="checkbox"/> Directive CE relative aux basses tensions 73/23 CEE; <input checked="" type="checkbox"/> Directive CE relative à la compatibilité électromagnétique 89/336 CEE avec les modifications y apportées.	– seriennummer op het produkt conform de volgende richtlijnen is: <input checked="" type="checkbox"/> EG machinerichtlijn 89/392/EWG met wijzigingen <input checked="" type="checkbox"/> EG laagspanningsrichtlijn 73/23 EWG <input checked="" type="checkbox"/> EG richtlijn Elektromagnetische compatibiliteit 89/336 EWG met wijzigingen	– No. de serie en el producto; satisface las disposiciones pertinentes siguientes: <input checked="" type="checkbox"/> Disposición de maquinaria de la CE 89/392/CEE con modificaciones <input checked="" type="checkbox"/> Disposición de baja tensión de la CE 73/23 CEE <input checked="" type="checkbox"/> Disposición de la compatibilidad electro-magnética de la CE 89/336 CEE con modificaciones.	– No. de serie en el producto; satisface las disposiciones pertinentes siguientes: <input checked="" type="checkbox"/> Disposición de maquinaria de la CE 89/392/CEE con modificaciones <input checked="" type="checkbox"/> Disposición de baja tensión de la CE 73/23 CEE <input checked="" type="checkbox"/> Disposición de la compatibilidad electro-magnética de la CE 89/336 CEE con modificaciones.	– cujo número de série encontra-se no produto - corresponde a <input checked="" type="checkbox"/> Directiva da CE de máquinas 89/392/CEE, com alterações <input checked="" type="checkbox"/> Directiva da CE de baixa tensão 73/23 CEE <input checked="" type="checkbox"/> Directiva da CE de compatibilidade electro-magnética 89/336 CEE, com alterações					
Landau/Isar, den	Landau/Isar, (date)	Landau/Isar, (date)	Landau/Isar, (date)	Landau/Isar, datum	Landau/Isar	Landau/Isar	Landau/Isar	Landau/Isar	Landau/Isar	Landau/Isar	Landau/Isar
9. 04. 1996	9. 04. 1996	9. 04. 1996	9. 04. 1996	9. 04. 1996	9. 04. 1996	9. 04. 1996	9. 04. 1996	9. 04. 1996	9. 04. 1996	9. 04. 1996	9. 04. 1996
Schneider Produkt-Management-L	Schneider Head of Product Management	Schneider Direction Gestion Produits	Schneider Hoofd product management	Schneider Director de gestión productos	Schneider Director de gestión productos	Schneider Chefe de Gestão de Produtos	Schneider Chefe de Gestão de Produtos	Schneider Chefe de Gestão de Produtos	Schneider Chefe de Gestão de Produtos	Schneider Chefe de Gestão de Produtos	Schneider Chefe de Gestão de Produtos

Achivierung / For archives: BMS-0409-16-909-E

# Replacement parts drawing PDM 600

Art.-Nr. 42.586.45, I.-Nr. 91016



**Replacement parts list PDM 600****Art.-Nr. 42.586.45, I.-Nr. 91016**

<b>Item</b>	<b>Designation</b>	<b>Replacement Part No.</b>
01	Screw	42.586.00.01
02	Chuck	42.586.00.02
03	Spindle	42.586.00.03
04	O-ring	42.586.00.04
05	Sliding bearing	42.586.00.05
06	Locating disk	42.586.00.06
07	Special gear wheel	42.586.00.07
08	Compression spring	42.586.00.08
09	Impact wheel	42.586.00.09
10	Bearing	42.586.00.10
11	Washer	42.586.00.11
12	Bracket	42.586.00.12
13	Contact	42.586.00.13
14	Ball bearing	42.586.00.14
15	Spacer ring	42.586.00.15
16	Rotor	42.586.00.16
17	Carbon brush	42.586.00.17
18	Spring	42.586.00.18
19	Brush holder	42.586.00.19
20	Insulating disk	42.586.00.20
21	Ball bearing	42.586.00.21
22	Stator	42.586.00.22
23	Left half of case	42.586.00.23
24	Slide	42.586.00.24
25	Cable grip	44.302.00.45
26	On/Off switch	42.586.00.26
27	Capacitor	42.586.00.27
28	Coil	42.586.00.28
30	Anti-kink sleeve	42.588.00.23
31	Power cable	42.586.45.01
32	Chuck key	42.589.00.26
33	Right half of case	42.586.00.33
36	Depth stop	42.589.00.06
37	Additional handle	42.586.00.37
38	Locating disk	42.586.00.38
39	Thumb screw M 6x50	42.589.00.03
40	Nut	42.589.00.04

## ® **WARRANTY CERTIFICATE**

The guarantee period begins on the sales date and is valid for 1 year.

Responsibility is assumed for faulty construction or material or functional defects.

Any necessary replacement parts and necessary repair work are free of charge.

We do not assume responsibility for consequential damage.

Your customer service partner

Service UK:

® Einhell Marketing Sales & Service  
15 Warwick House Ind. Park, Banbury Road,  
**Sautham, Warwickshire CV 33 OPS**  
**Telephone: Sautham (01926) 814156**  
**Facsimile: (01926) 813151**

Technical changes subject to change

wegm. 7/96