



Einhell

EXPERT

TE-SM 2131 Dual

Sliding Mitre Saw

Art.-No.: 4300860

Ident-No.: 11013

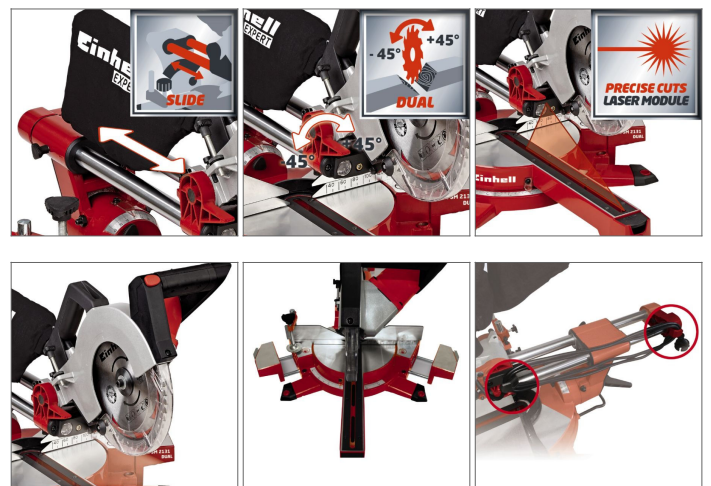
The TE-SM 2131 Dual is a powerful drag, crosscut and miter saw for cutting wood, laminated panels and plastic. The saw head can be tilted continuously to the left and right for high flexibility in setting miters on two sides. An integrated, mains-powered laser marks the cutting line, enabling the workpiece to be positioned quickly and exactly.

Features

- Integrated drag function for wide workpieces
- Turntable with precise angle setting for angular cuts
- Saw head tilts to the left and right for miter cutting
- Includes laser (mains-powered) for precise guidance while cutting
- Includes LED light for optimal illumination of the cutting area
- X-Tend work supports with ergonomic singlehand operation facility
- Integrated limit stop for simple repeat cutting
- Workpiece stop with rails adjustable to the left and right
- High-grade carbide-tipped precision saw blade
- Clamping device for holding the workpiece securely in position
- Practical cable holder for easy storage of the cable
- Soft start ensures a gentle, user-friendly start
- Includes sawdust bag to keep the workplace clean
- The transport brace ensures safe mobility

Technical Data

• Mains supply	230-240 V 50 Hz
• Max. power (S6 S6%)	1600 W 20 %
• Idle speed	5000 min ⁻¹
• Saw blade	Ø210 x ø30 mm
• Number of saw teeth	48 Pieces
• Mitre cut	-45 ° - +45 °
• Swiveling range	-47 ° - +47 °
• Cutting width 90° x 90°	310 x 65 mm
• Cutting width 90° x 45°	210 x 65 mm
• Cutting width 45° x 90°	310 x 35 mm
• Cutting width 45° x 45°	210 x 35 mm
• Diameter of suction adapter	36 mm



Logistic Data

• Product weight	11.5 kg
• Gross weight single packaging	16.1 kg
• Dimensions single packaging	820 x 490 x 335 mm
• Pieces per export carton	1 Pieces
• Gross weight export carton	14.5 kg
• Dimensions export carton	335 x 830 x 490 mm
• Container quantity (20"/40"/40"HC)	224 462 530



Illustrations can contain accessories, which are not included in standard extent of delivery
 Illustration similar (in design), production-wise modifications reserved
 GS mark belongs to the product itself only, excluded accessory